

How to setup an ADSL Internet connection on Alcatel Speed Touch 510 (One & Four ports)

In order to connect to the internet using this device you must make sure of the following :

- Connect the power adapter to a 220 V power source
- make sure to split the phone line using ADSL splitter which will split the ADSL signal & the voice signal
- connect the UTP network cable to the device & the PC

P.S: when you do the previous steps you will notice that all of the lids on the back of the router are green & the most important one is the @ lid (light) which indicates that the ADSL service is running on the phone. Insert the provided CD into the CD drive, you will see the following screen :



Figure 1.0.0

Press Next

The next screen displays the services in the router

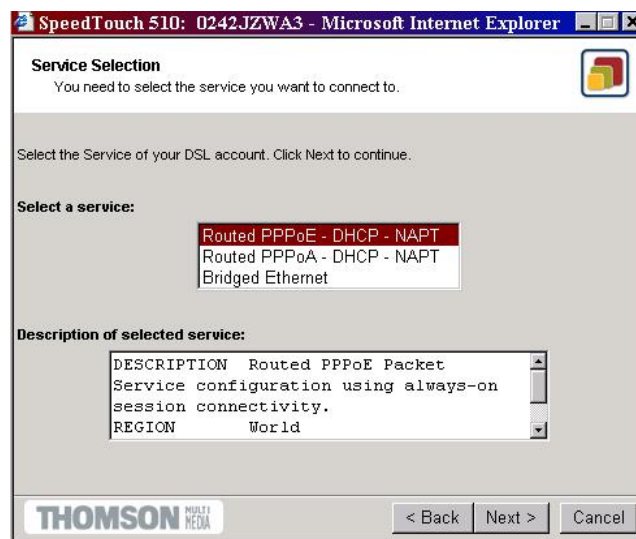


Figure 1.0.1

Choose Routed PPPoE–DHCP –NAPT then press Next

Press Next, A new screen will appear explaining the VPI/VCI Choose 0.35

SpeedTouch 510: 0242.JZWA3 - Microsoft Internet Explorer

Routed PPPoE Packet Service
Specify the details of the Routed PPPoE Packet Service. All information should be provided by your ISP.

VPI/VCI: 0.35
Choose a VPI/VCI from the list

Auto-configured:

THOMSON
< Back Next > Cancel

Figure 1.0.2

The Default VPI /VCI in the kingdom of Saudi Arabia is 0.35

After Choosing The VPI/VCI press Next

You will get a new screen asking for the PPP user name & password (ADSL Account Username & Password)

SpeedTouch 510: 0242.JZWA3 - Microsoft Internet Explorer

PPP Account Settings
Specify the details of the Routed PPP Account. All information should be provided by your ISP.

User Name: Guest@256.cyberia.net.sa
Enter your Internet connection user name.

Password: *****
Enter your Internet connection password.

Access Concentrator:
Enter the PPPoE Access Concentrator Name.

Service Name: Cyberia 256K ADSL
Enter the PPPoE Service Name.

THOMSON
< Back Next > Cancel

Figure 1.0.3

Make sure that the information provided by your Internet Service Provider are correct then press Next :

Pressing Next will take you to the following screen

You are requested to choose a Username & Password for the interface of your device (Router).

Note: The Username & Password in this screen are optional but Important to secure your settings and device from unauthorized access to your router.

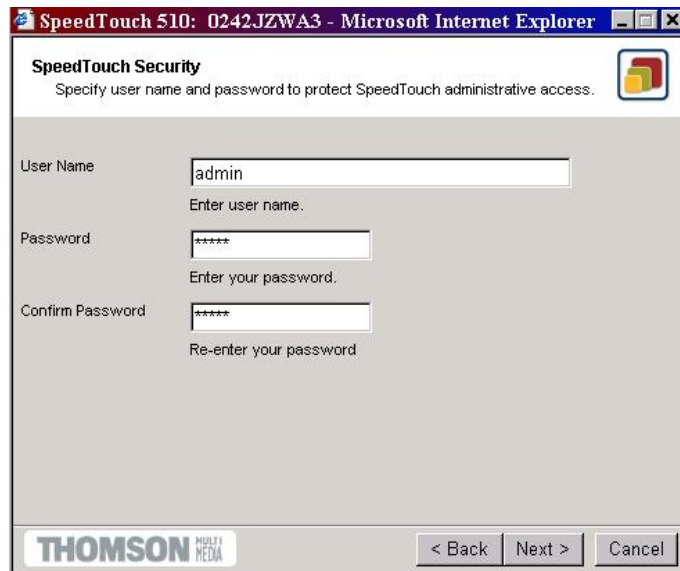


Figure 1.0.4

Try using (admin) in the Username & Password or any other username you choose that will guarantee the protection of your device

After choosing a Username & Password press Next, you will see a screen listing all your settings to make sure that they are right.

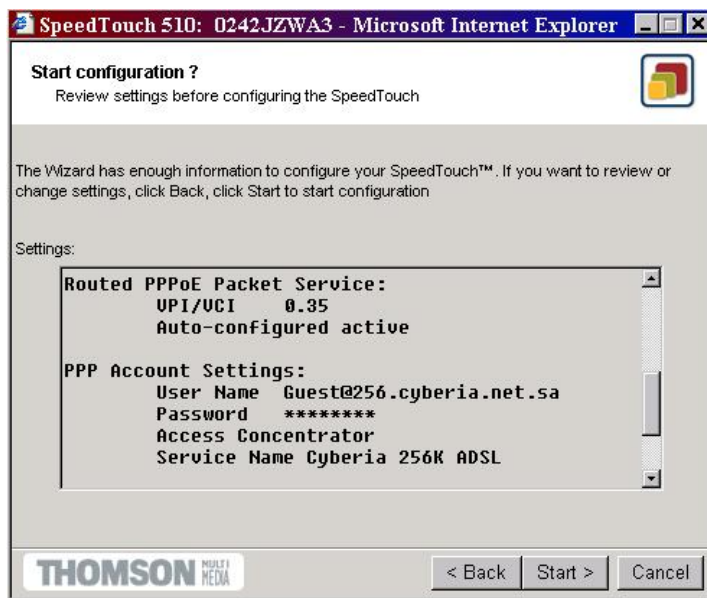


Figure 1.0.6

As you can see, all data you've entered is shown on this screen, If all is ok then press **START**

Clicking START will open a new screen , all what you have to do now is press **FINISH** & wait



Figure 1.0.6

Once done, open your Internet Explorer & go to **Tools** Then **Internet Options** ,**Connections** then **LAN Setting**

Put a check mark ✓ on use a proxy Server Then write in the address **DSL.Cyberia.net.sa & the Port 8080**

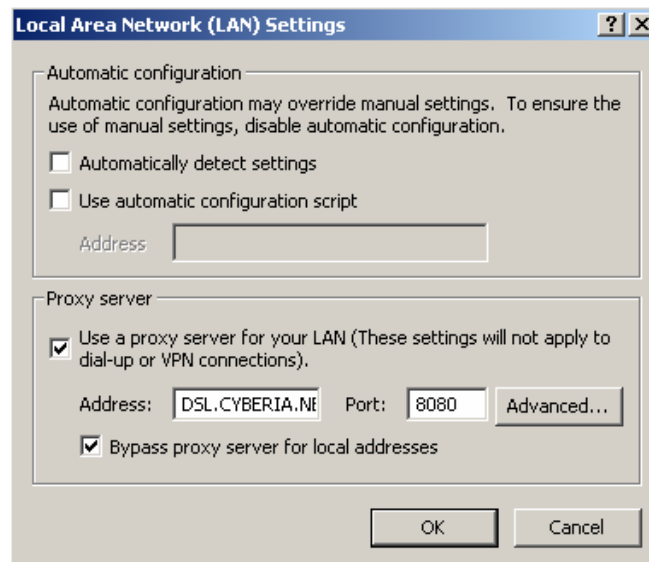


Figure 1.0.7

Now go to **ADVANCED**

Put a check mark ✓ on

Use the Same proxy server for all protocol then look down and enter in the **exceptions** box (10.*;) as shown in the following figure

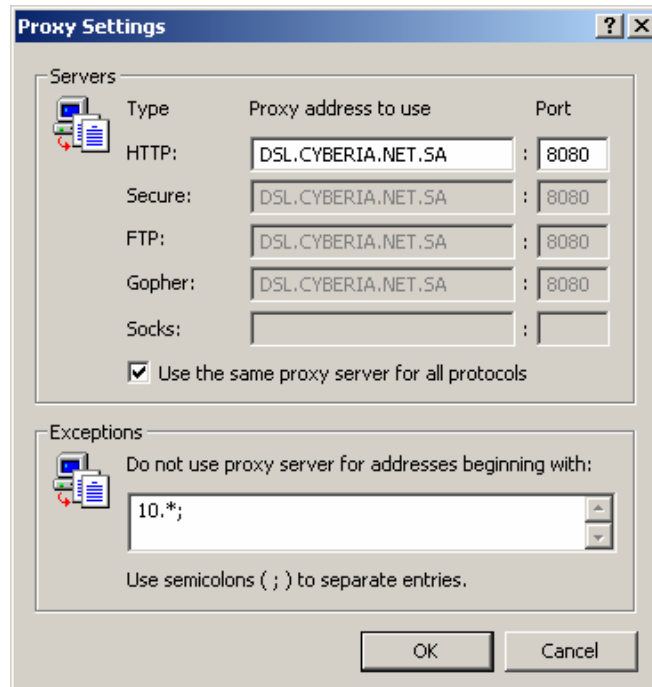


Figure 1.0.8

Keep pressing OK to go back to the Internet Explorer Page

Type <http://10.0.0.138> in the Internet Explorer address bar

Enter the interface Username & Password & press Ok, the following interface will appear



Figure 1.0.9

Go To **Connections** :

You will see the following screen

The screenshot displays the Thomson Speedtouch Alcatel web interface. At the top, the Thomson Multi Media and Speedtouch Alcatel logos are visible. On the left, there is a navigation menu with '500 series' and 'Save All Help' buttons. Below the menu, there are sections for 'Basic' (containing System Information, Connections, and System Log) and 'Advanced'. A 'WARNING: Modemline is down' message is shown at the bottom left. The main content area is titled 'Connections' and features a table with the following data:

Interface	Destination	Mode	Link	State
PPPoE_1	RELAY	always-on	connected	up

Below the table, there is a section for 'Connection properties' with the heading 'Specify your username and password:'. It includes input fields for 'User' (containing 'Guest@256.cyberia.net.sa') and 'Password' (containing '*****'). A checkbox for 'Save this password' is checked. At the bottom of this section are 'Disconnect' and 'Help' buttons.

All rights reserved © Copyright 2003, THOMSON

Figure 1.1.0

Notice that you are connected & the state is UP

This will conclude the Router settings; you can start using the Internet.

Good Luck