

## Setting Up the Speed Touch USB 330 ADSL Modem

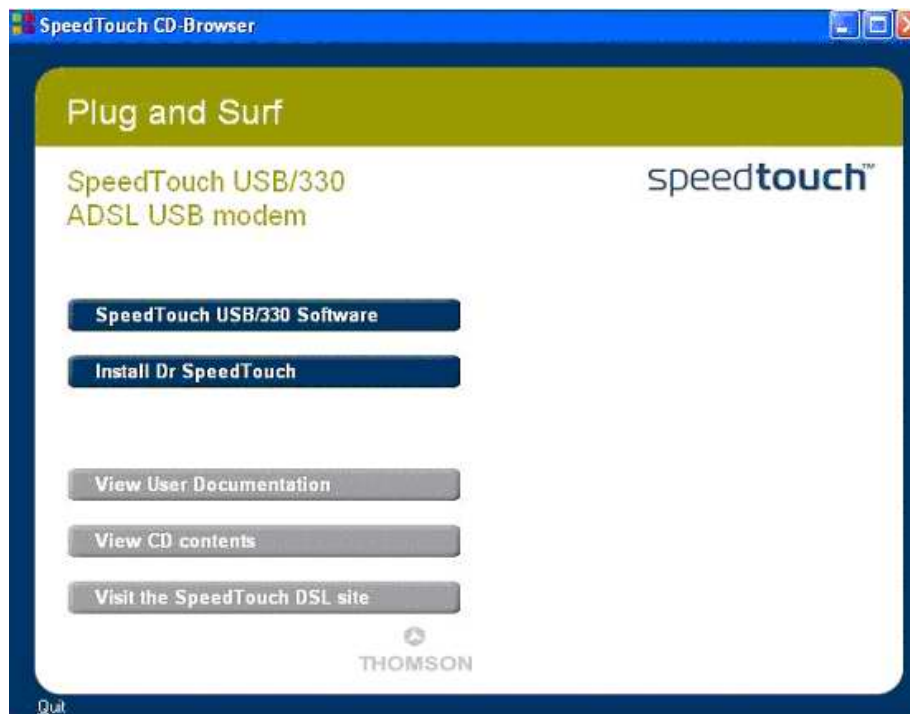
### Step 1:

Insert the installation CD, it will run automatically, otherwise right click on the CD ROM icon and select Auto Play



### Step 2:

Select the English language then click Ok as below

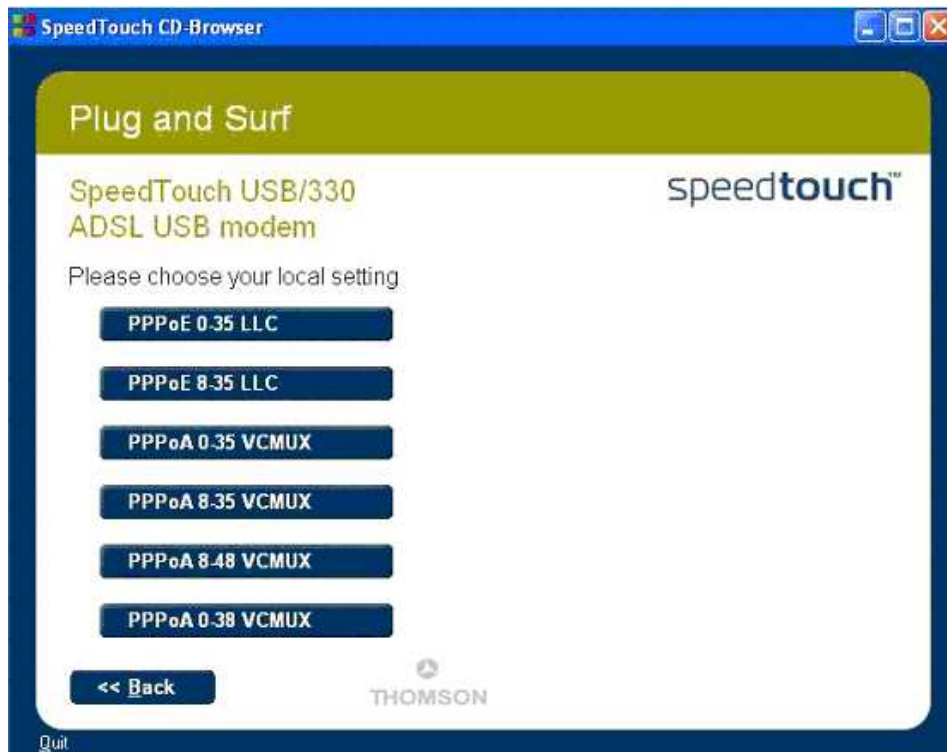


### Step 3:

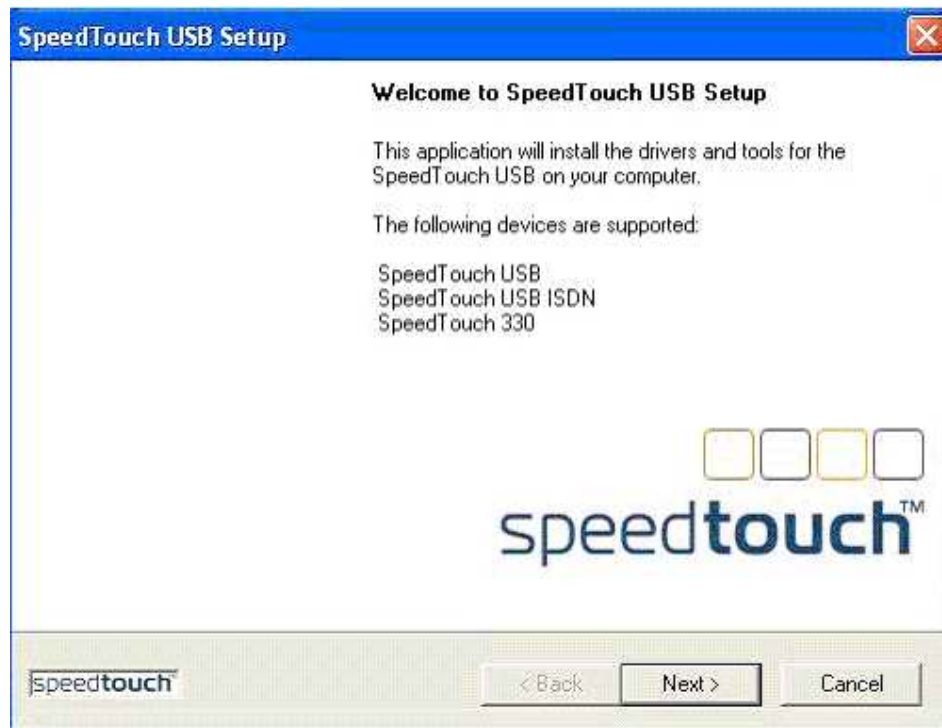
Select Speed Touch USB 330 software



**Step 4:**  
Select Install USB Software

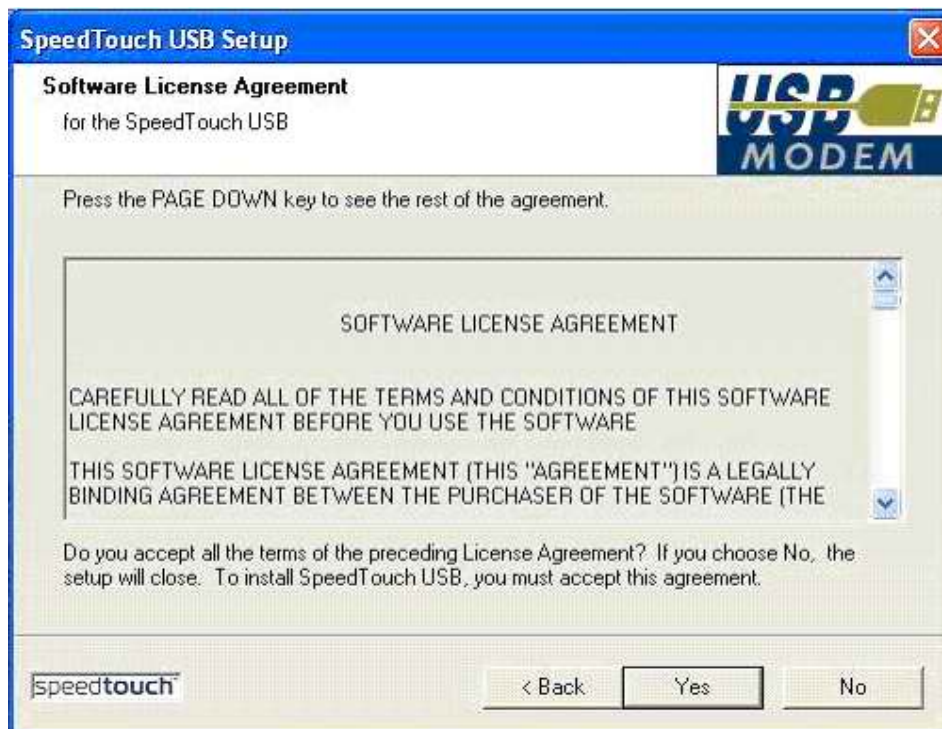


**Step 5:**  
Select PPPoE 0-35 LLC as local setting



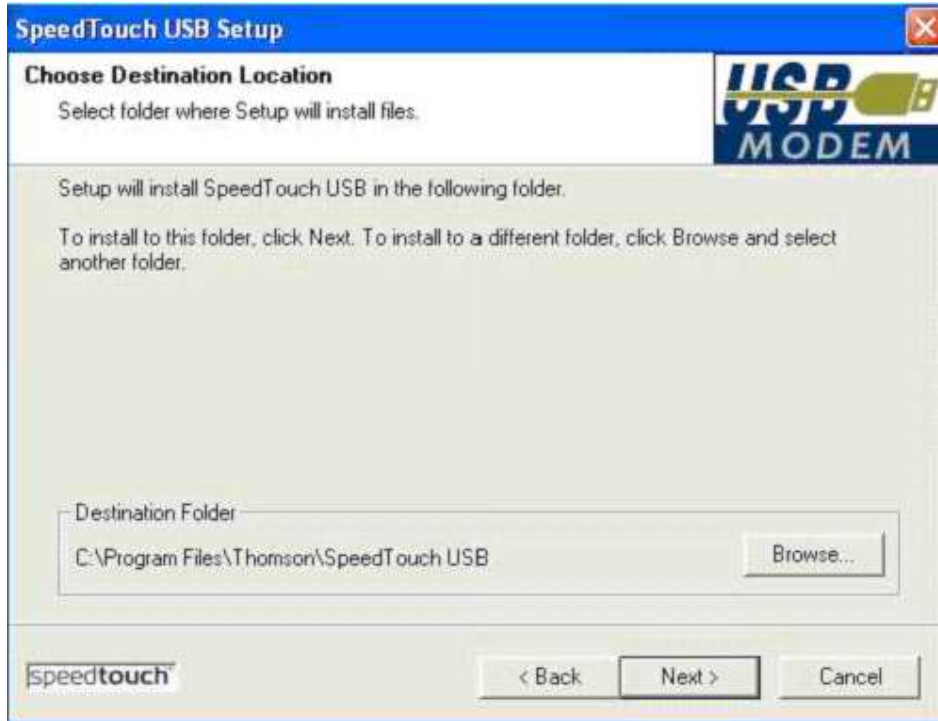
**Step 6:**

On the Speed Touch USB Setup page Press Next



**Step 7:**

On the Software License Agreement page press "Yes"



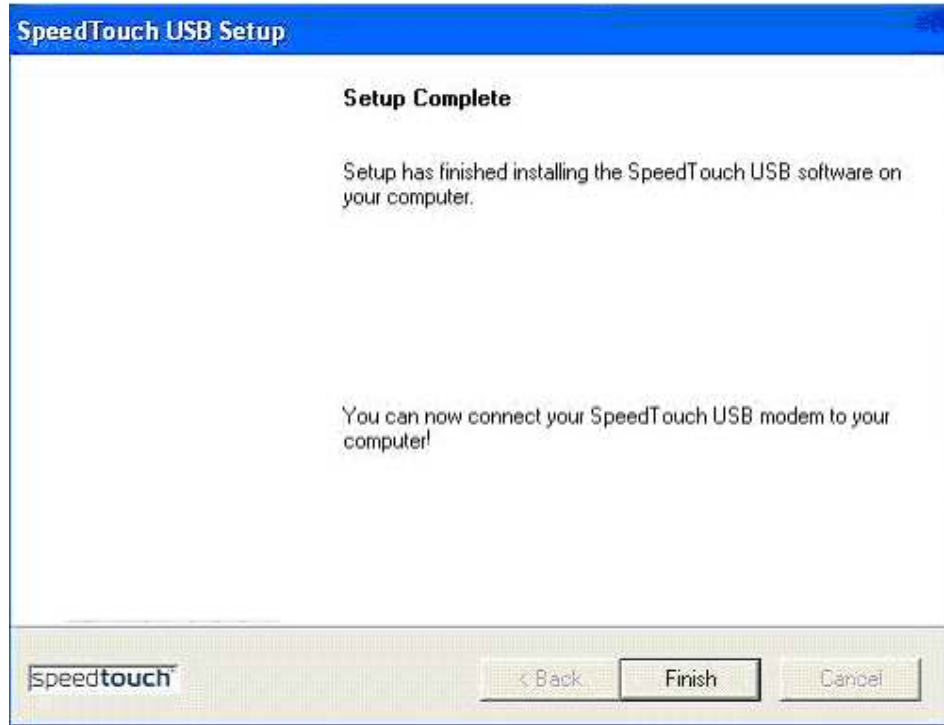
**Step 8:**

Choose Destination Location then press Next



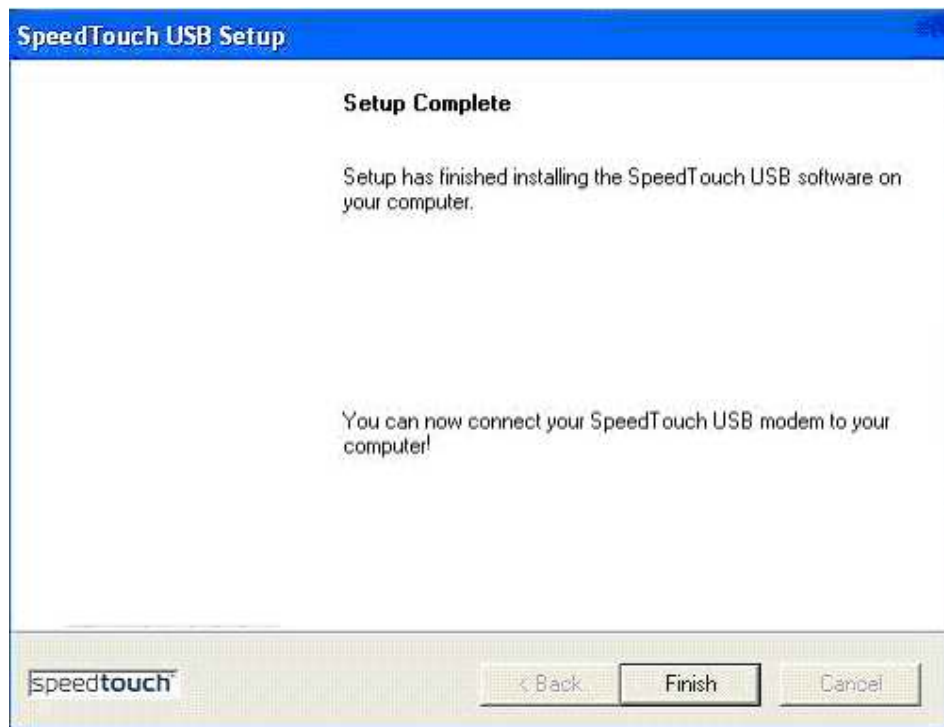
**Step 9:**

Select Program Folder then click next



**Step 10:**

Press Finish



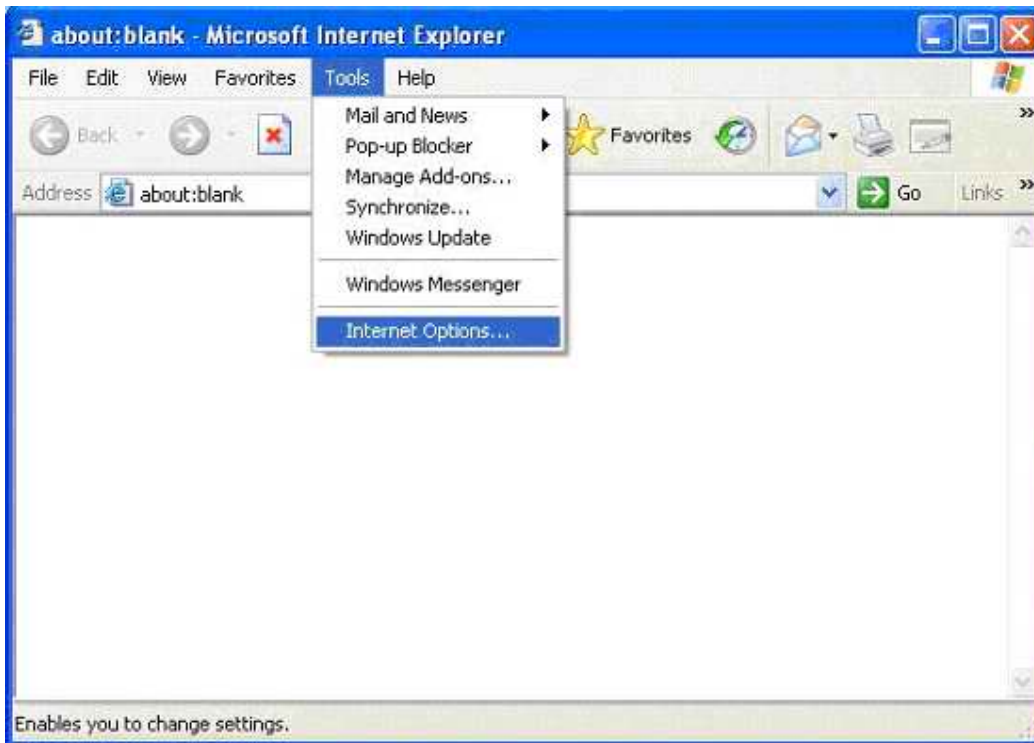
**Step 11:**

Click on the Speed Touch connection icon on the desktop, type the user name and password and click connect



**Step 12:**

After establishing the connection, open the Internet Explorer, go to Tools then Internet Options



**Step 13:**

Click on Connections Tab and double click on the Speed Touch connection



**Step 14:**

Add Cyberia proxy "dsl.cyberia.net.sa and the port is 8080" to the proxy server settings, then click Ok until the Internet Options window closes

